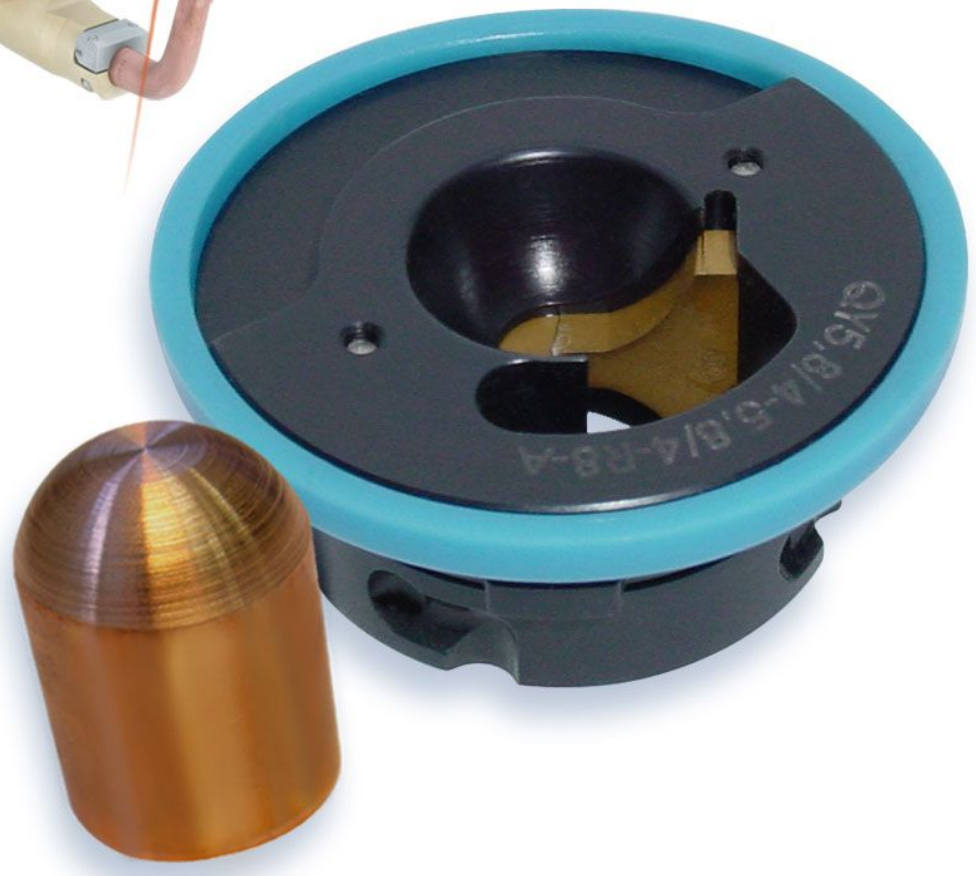
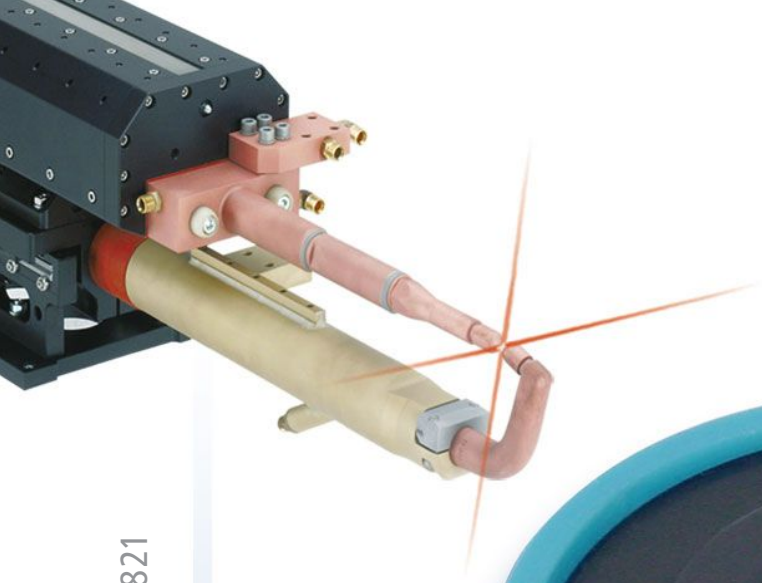


High Precision Milling Tool for Spot Welding Electrodes as per DIN/ISO 5821



## Single-Blade milling tool



- For electrode cap form F (ISO 5821) or similar
- Interchangeable cutter blade
- HSS cutter blade, titanium coated
- Bayonet tool holder
- Integrated cutter rotation detection (1 LED)

**Lutz Technik GmbH**

Hildachstrasse 12-14  
D - 81245 München

Phone: +49 (0)89 820 306 -0  
Fax: +49 (0)89 820 306 -59  
www.lutz-precision.com

**Lutz Técnica Brasil Ltda.**

Rua Irineu Vilella Veiga, 135  
Salas 06 e 07, CEP 89.279-000  
Bairro Centro - Guaramirim, SC - Brasil

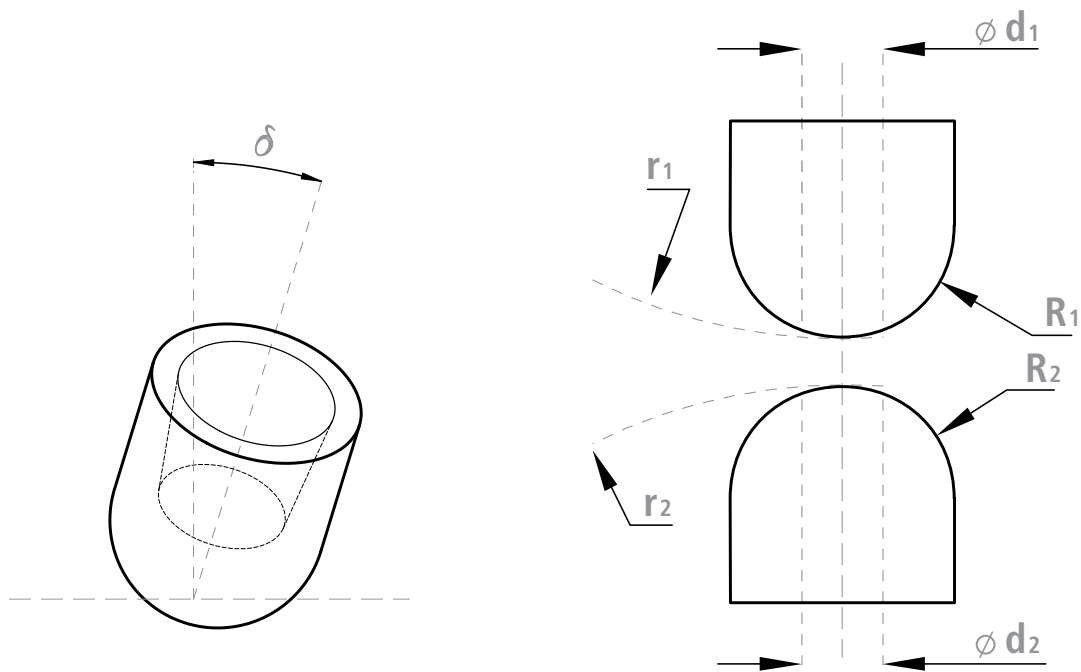
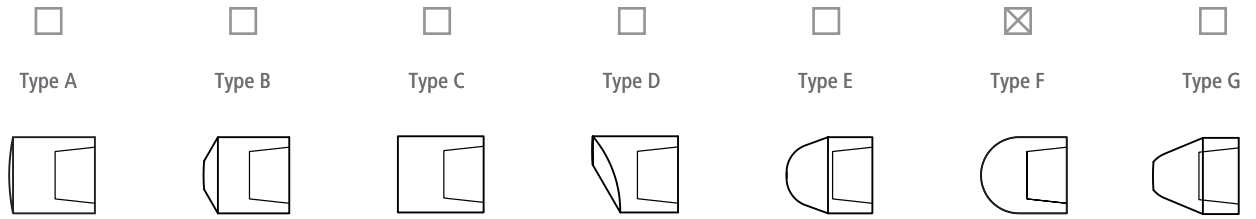
Phone: +55 47 373 - 2659  
Fax: +55 47 373 - 3527

**Lutz Precision Ltd.**

368 Betty Street  
Windsor, ON N8S 3W6,  
Canada

Phone: +1 519 566 92 16  
Fax: +1 866 362 59 88

Dressing tools are available for the following ISO standard electrodes and in conversion holders to fit in these competitors machines: \* **ABB, AEG, AMDP, Bräuer, EDI, Exrod, Gem, Hitech, Obara, Retek, Rotech, Semtorq, Sinterleghe, Stillwater.**



Part number	Lutz reference	d <sub>1</sub>	r <sub>1</sub>	R <sub>1</sub>	d <sub>2</sub>	r <sub>2</sub>	R <sub>2</sub>	Holder	δ
QY5,0/4-5,0/4-R6,5-A	3.88.21.50	5,0	40	6,5	5,0	40	6,5	AEG	0°-15°
QY5,8/4-5,8/4-R6,5-A	3.89.00.34	5,8	40	6,5	5,8	40	6,5	AEG	0°-15°
QY5,8/4-5,8/4-R8-A	3.88.00.11	5,8	40	8,0	5,8	40	8,0	AEG	0°-15°
QY5,8/4-5,8/4-R8-A	3.88.00.02	5,8	40	8,0	5,8	40	8,0	AEG	0°-15°
QY6,0/4-6,0/4-R8-A	3.88.00.94	6,0	40	8,0	6,0	40	8,0	AEG	0°-15°
QY8,0/4-8,0/4-R8-A	3.88.00.89	8,0	40	8,0	8,0	40	8,0	AEG	0°-15°

\* Specials available upon request. Variations in cap profile can occur depending on weld gun geometry and correct alignment.